

OUR OFFERINGS

Tools, resources, and services
to accelerate the impact of
landscape partnerships



JUNE 2024



About 1000 Landscapes for 1 Billion People

A collaboration of global change agents, *1000 Landscapes for 1 Billion People* (henceforth “1000L”), is accelerating efforts to sustain and restore ecosystems, build rural prosperity, and confront climate change.

We are a global coalition of NGOs, companies, governmental and intergovernmental organizations, Indigenous Peoples organizations, and landscape partnerships who aim to resolve the world’s interconnected crises through integrated action in landscapes.

Our vision is to help 1000 locally-led landscape partnerships supporting 1 billion people transform their regions into thriving, resilient landscapes by 2030. We’re committed to fostering human well-being, healthy nature, regenerative economies, and inspiring actionable change. Join us in this transformative journey for a balanced and sustainable relationship with our planet.

Learn more at www.landscapes.global.

Contributing Partners:



Copyright

© 2024, 1000 Landscapes for 1 Billion People.

1000L is an initiative of Commonland, Conservation International, EcoAgriculture Partners, Rainforest Alliance, Tech Matters, and the United Nations Development Programme. The initiative jointly and severally maintains ownership of this document.

License

“Our Offerings: Tools, resources, and services to accelerate the impact of landscape partnerships” is offered for the public to use and share under the Creative Commons 4.0 Attribution-NonCommercial-NoDerivatives license. To view this license, visit <https://creativecommons.org/licenses/by-nc-nd/4.0/>.

Sharing this material

All or portions of this report may be used, reprinted or distributed, provided the source is acknowledged. No use of this publication may be made for resale or other commercial purposes.



CONTENTS

INTRODUCTION	1
Building a global movement to transform landscapes	1
Who should use this guide	2
Access and cost	2

UNDERSTANDING INTEGRATED LANDSCAPE MANAGEMENT AND FINANCE	3
Understanding Integrated Landscape Management	3
ILM Resources	4
Understanding Integrated Landscape Finance	5
ILF Resources	6

IMPLEMENTING INTEGRATED LANDSCAPE MANAGEMENT AND FINANCE	7
Resources	8
Capacity strengthening learning modules	9
Landscape finance accelerator	14
Terrascope digital tools	15
Landscape	16

INVESTING IN LANDSCAPE PARTNERSHIPS AND THE LANDSCAPE MOVEMENT	17
Resources	18



INTRODUCTION

BUILDING A GLOBAL MOVEMENT TO TRANSFORM LANDSCAPES

As the world grapples with climate change, threatened food systems, biodiversity loss, ecosystem destruction, poverty, and water insecurity, the need for innovative and unified solutions has never been more urgent. The sustainability of people and the planet depends on a shared foundation of land and water resources. Traditional fragmented approaches, often isolated, uninformed by, or even harming local and Indigenous actors, have proven inadequate at generating effective solutions.

Yet fresh hope emerges through the innovative action of locally-led landscape and seascape partnerships (LPs). LPs operate at the level of landscapes and seascapes—mosaics of social and ecological systems where natural habitats, agriculture, productive land use, and human settlements intersect. Landscapes encompass diverse sectors, scales, and systems, offering an effective scale for place-based, systemic innovation. Local people come together to find and champion holistic strategies to manage landscapes, departing from top-down sectoral management and achieving four returns for their communities: human well-being, healthy nature, regenerative agriculture and economies, and inspiration.

Despite their promise, LPs often lack capacity, resources, finance, and backing from national governments and businesses. Data and software tools—so impactful in other sectors—are hardly available for local land managers. More and more organizations, networks, and institutions have begun offering their support. But their actions remain fragmented and short-term, lacking the ambition, resources, and orchestration needed for a cohesive movement that generates impact at scale.

Over the past four years, our coalition of over forty partners has reviewed, designed, and tested a suite of capacity strengthening, finance, coalition building, and digital tools, methodologies, and frameworks to accelerate the impact of LPs. The offerings summarized in this catalog reflect the outputs of our collaborative efforts. They provide powerful tools, resources, and services that make the landscape management process easier, more effective, and more inclusive. Please contact us if your organization has resources, tools, or training materials related to landscape management. We have a standardized framework, process, template, and review process to integrate resources from aligned organizations, and we would love to include yours as well.

WHO SHOULD USE THIS GUIDE

1000L's growing portfolio of tools, resources, and services is valuable to many potential users. We invite everyone to peruse this catalog and find offerings to help you and your organization reach your landscape-based objectives. Here are just a few of the groups who will find utility in our work:

- **Citizens** seeking to learn how to harness Integrated Landscape Management and the 4 Returns Framework to improve their communities. Go to the section on [Understanding ILM](#).
- **Established Landscape Leaders and Partnerships** searching for practical guidance and tools for implementing ILM. Go to the section on [Implementing ILM](#).
- **Nonprofit and government staff** working on programs fostering climate change adaptation and mitigation, biodiversity conservation, regenerative food systems and agriculture, sustainable development, and alleviating rural poverty. Start with [Understanding ILM](#) to learn how it can help.
- **Officers of finance institutions** combing the world for better, more sustainable ways to invest. Go to the section on [Investing in LPs and the Landscape Movement](#).
- **Business leaders** interested in bolstering their business practices and supply chains by working through a framework that builds resilience into their operations. Go to the section on [Investing in LPs and the Landscape Movement](#).

ACCESS AND COST

All 1000L resources have been produced using an [open Creative Commons license](#) under the Creative Commons guidelines. Many of our offerings benefit from direct advising and mentorship from the 1000L team to adapt, translate, and implement.

While all of our tools and resources are free, support and consultation by 1000L partners may require compensation. To connect with our team and learn more about integrating our offerings into your programs or LP, contact Tom Miewald, Director of the 1000L Hub, at tmiewald@ecoagriculture.org.



UNDERSTANDING INTEGRATED LANDSCAPE MANAGEMENT

LPs employ a scientifically grounded, field-tested practice called **integrated landscape management (ILM)**. ILM is the foundation upon which 1000L's tools, resources, and services are built. The ILM methodology uses a systems approach to address multiple challenges simultaneously, achieving synergies and minimizing trade-offs among natural resources, ecosystem management, and user interests. Through the process, stakeholders can transform their landscapes, achieving 4 Returns: **human well-being, healthy nature, sustainable economies, and inspiration.**

The following resources offer an introduction to the ILM approach.

THE INTEGRATED LANDSCAPE MANAGEMENT FRAMEWORK

We have developed an adaptive, collaborative and iterative ILM framework to help stakeholders achieve transformational change in their landscape.

The ILM framework has five elements that provide context and guidance to any LP as it works to create a more resilient and sustainable landscape.





RESOURCES

Understanding Integrated Landscape Management



Introduction to ILM

This video presents the basic concepts of ILM through an engaging, narrated animation. It shows viewers how ILM can transform a landscape and why it is so effective.



Introduction to the 4 Returns Framework

This website offers a brief overview of the 4 Returns Framework, a practical approach to bring stakeholders together to implement ILM and achieve social, environmental, economic, and inspirational returns.



Little Book of Sustainable Landscapes

The Little Sustainable Landscapes Book shares what it takes to achieve sustainable development through integrated landscape management. From the basics to detailed guidance, this handbook offers insights to catalyze implementation across private and public sectors worldwide.



UNDERSTANDING INTEGRATED LANDSCAPE FINANCE

Sustainable development that is tailored to local contexts and needs led by LPs requires financing that supports holistic transformations at the farm, enterprise, supply chain, and landscape levels.

Integrated Landscape Finance (ILF) is an emerging approach that aligns multi-project, multi-sector investments with the specific needs of local landscapes in terms of biodiversity, water, livelihoods, and climate. ILF involves a process-oriented methodology for planning, sequencing, coordinating, and organizing projects and activities, taking into account their financing needs to achieve defined objectives. It emphasizes the coordination and communication with various internal and external stakeholders to ensure cohesive and effective investment strategies that are long-term and place-based.

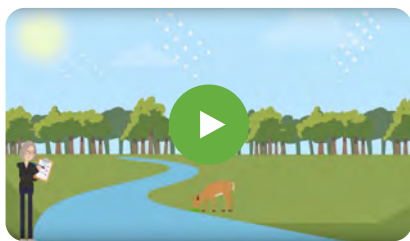
ILF supports integrated landscape management and locally led approaches by recognizing that ecological and economic interactions among different projects and enterprises in a landscape can influence profitability, risk, and impacts. Coordinated investment planning can enhance business and project performance and accelerate positive social, environmental, and economic change at the landscape scale.

ILF includes accessing new funding flows, aligning existing flows, and mitigating harmful flows to maximize impact while reducing risk. This approach addresses the needs of both local partners and investors, creating benefits for both parties and ensuring the success of locally led strategies and processes.

Integrated Landscape Finance (ILF) is an emerging approach to financing that aligns multi-project, multi-sector investments with the specific needs of local landscapes in terms of biodiversity, water, livelihoods, and climate. ILF involves a process-oriented methodology for planning, sequencing, coordinating, and organizing projects and activities, taking into account their financing needs to achieve defined objectives. It emphasizes the coordination and communication with various internal and external stakeholders to ensure cohesive and effective investment and funding strategies which have a long-term and place-based objective at their core.

RESOURCES

Understanding Integrated Landscape Finance



How Reimagining Global Financial Systems Can Heal our Planet

This video discusses what ILF is, why it works, and what needs to be done to implement it. Featuring interviews with industry experts, it provides a clear and digestible overview of ILF and its importance.



Integrated Landscape Finance: Coordinated Funding to Multiply Large-scale Benefits

This brief explainer provides a simple summary of the concept of ILF and the main concepts underpinning the approach.



Mobilizing Finance Across Sectors and Projects to Achieve Sustainable Landscapes: Emerging Models

This pioneering report provides a grounding in ILF and inspires innovation by LPs, service providers for landscape finance, developers of landscape finance vehicles, and investors. It describes the elements of an ILF systems, models of landscape investment service providers, and landscape finance vehicles.



Case examples of Landscape Finance Portfolios

This collection of twelve presentations from selected LPs demonstrates their process and learnings from developing integrated portfolios of investable activities across the landscape.



Case Examples of Integrated Landscape Finance Mechanisms

This collection of presentations from finance developers and LPs explains various mechanisms exemplifying the diversity of approaches to securing landscape financing.



IMPLEMENTING INTEGRATED LANDSCAPE MANAGEMENT AND FINANCE

ILM takes many forms, ranging from climate-smart or agroecological landscapes to green growth corridors to integrated watershed management. All include common elements:

- An organized platform or partnership
- Agreement on long-term transformative landscape goals
- Multi-benefit land use and business practices
- Policies, markets and finance aligned with landscape goals



ILM is implemented through a collaborative and iterative process implemented over a long time scale (20+ years). The following resources provide practical guidance, tools, learning modules, and services to support LPs and the organizations collaborating with them to implement ILM and ILF.

RESOURCES

Implementing Integrated Landscape Management and Finance

GETTING STARTED



Interactive Practical Guide to ILM

This guide presents the fundamentals of ILM in a digestible and practical format. It walks through ILM’s five elements and illustrates two to four concrete outputs within each that LPs can produce to advance action to achieve their landscape goals. The guide also references case examples within each element. Static versions of the guide in [English](#), [Spanish](#), and [Portuguese](#) are also available on the 1000L website.



Interactive ILM Tool Guide

This interactive guide accompanies the practical guide in equipping landscape leaders with the fundamental tools they need to implement ILM.



The 4 Returns Framework for Landscape Restoration

The 4 Returns Framework for landscape restoration is a practical and tested systems-change framework used by stakeholders to undertake a landscape approach. 4 Returns connects ecology, community values, spirit and culture, business, and long-term economic sustainability at the landscape level. The framework balances competing stakeholder demands and allows government, business, and communities to co-create and deliver a shared vision for a resilient landscape.



Situation and Exploration Tools (SET)

The Situation and Exploration tools help landscape leaders and other stakeholders assess the current situation of their landscape, laying the foundation for a successful LP. Divided into three parts, the set of self-guided exercises allows LPs to identify any previous experience with ILM, identify problems in the landscape, and plan for future collaboration.

GOING DEEPER

Capacity Strengthening Learning Modules

1000L is developing a comprehensive and locally adaptable set of learning modules based on the Integrated Landscape Management (ILM) process. These modules are designed to enhance the foundational skills of landscape practitioners (LPs), ensuring the quality and success of ILM practices within their landscapes. The curriculum includes practical case studies, interactive exercises, and a variety of tools to support effective implementation.

Each module offers a range of materials suitable for different needs, including facilitation guides, slide decks, and visuals in adaptable formats. The learning materials are designed for experienced facilitators who can confidently deliver sessions on unfamiliar topics using only a facilitation guide. In the future, we plan to offer additional support to help less experienced facilitators deliver these sessions effectively. We encourage you to adapt these materials to suit your specific context, including adding local stories and examples. Using the included prompts, feel free to customize them with your branding and organizational details.

Introduction to Integrated Landscape Management

This module introduces the ILM framework to landscape practitioners who want to understand the basic concepts of the Integrated Landscape Management process. This module is available in two versions:

- **In-person:** This in-person, full-day session introduces the ILM framework and includes interactive activities for large and small groups. The ideal number of participants is 8-30.
- **Online:** While designed for online delivery, this online training on Intro to ILM has a structure that encourages interaction. The training consists of two 2-hour sessions delivered on a video-conferencing platform and is divided into Parts 1 and 2. The ideal number of participants is 8-12 to allow for significant discussion and interaction.

Introduction to Integrated Landscape Finance *(Coming Soon)*

This learning module provides facilitators with the skills and information they need to begin conducting a landscape finance assessment with other stakeholders in the landscape. They will learn the fundamentals of landscape finance, recognize the financial assets within a landscape, and more.



Diversity, Equity, and Inclusion in Landscapes

This module introduces Diversity, Equity, Inclusion and Justice (DEIJ), what this means in your landscape, and how to analyze and promote it across landscape initiatives. This module is available in two versions:

- **In-person:** This in-person, 2-day session equips participants with foundational concepts around DEI and grounds these to the realities of their landscape. Optionally, the session includes guidance on how to form a DEI committee to maintain inclusivity as a transversal aspect in all strategies, plans, and activities undertaken by the LP. This training works best when participants are a group of diverse stakeholders from the same landscape. The ideal number of participants is 8-25.
- **Online:** This 2-hour online training introduces the concepts of DEIJ as a cross-cutting part of ILM. It helps participants identify, analyze, and evaluate the conditions of DEIJ in their landscape and provides tools to develop a strategy for implementing it. This is a 2-hour session on a video-conferencing platform. The ideal number of participants is 8-12.



Stakeholder Mapping, Analysis, and Engagement

This module introduces Diversity, Equity, Inclusion and Justice (DEIJ), what this means in your landscape, and how to analyze and promote it across landscape initiatives. This module is available in one version:

- **Online:** In this online 2-hour training, participants learn about the process of inclusive stakeholder mapping, analysis, and engagement. They are introduced to different tools to map key stakeholders in a landscape, learn about different engagement methods for diverse stakeholders in the landscape, and understand the steps to design a stakeholder engagement strategy. This is a 2-hour session on a video-conferencing platform. The ideal number of participants is 8-12.



Landscape Partnerships: Cross-Sectoral and Multi-Stakeholder Governance

This module introduces participants to the heart of ILM: Landscape Partnerships. It explores the different functions of a LP's possible organizational structures and explores various modalities of participatory landscape governance. This module is only available in one version:

- **Online:** In this online training, participants learn about the role of LPs and their relevance in landscape governance. The training also describes the practical process for developing an appropriate LP agreement and possible organizational structures. It also explores the various key roles that partners can assume in landscape governance. This module was developed as a 2-hour session on a video-conferencing platform, and the ideal number of participants is 8-12.



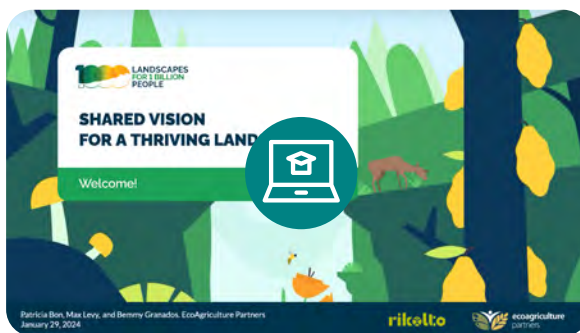
Shared Leadership *(Coming Soon)*

This module provides facilitators with the skills and information to facilitate shared leadership throughout the ILM process. With this guide, facilitators will learn that shared leadership involves distributing landscape management responsibilities among local team members and partner organizations to foster collaboration and collective decision-making.

Shared Vision

This module focuses on the development of shared visions for LPs. A shared vision describes a partnership's aspirations for its landscape on a generational time scale. It creates common ground for all stakeholders, enables future collaboration, and informs strategy development and landscape action planning down the line. This module is available in two versions:

- **In-person:** In this in-person, full-day workshop, participants co-create the first draft of a shared vision. Step by step, they learn about the concepts and apply the tools immediately. The workshop has interactive activities for large and small groups, focusing on sharing knowledge and finding common ground. This training works best when participants are a group of participants from the same landscape. The ideal number of participants is 8-25.
- **Online:** This 2-hour online training guides participants to understand what a "Shared Vision" is, including its "key ingredients" (areas, benefits, time frame). Participants learn how to facilitate a process to develop a shared vision in their landscape. This was developed as a 2-hour session on a video-conferencing platform. The ideal number of participants is 8-12.



Facilitation for ILM

The effectiveness of ILM workshops relies heavily on the quality, skills and abilities of the facilitator(s) leading the sessions. This module was designed for landscape facilitators who would like to strengthen their facilitation skills and participatory training methods. For best results, this training should only be facilitated by Master Trainers who have participated in this training themselves and have 4+ years of coaching, training, and facilitation experience. This module is only currently available in one version:

- **In-person:** This 5-day in-person training equips participants with an extensive toolbox of training and facilitation skills to implement the other ILM sessions. This training is for trainers, landscape facilitators, and landscape weavers who already deliver and contextualize face-to-face sessions and want to strengthen their capacity. The ideal number of participants is 12-25.



Communication Strategies *(Coming Soon)*

This learning module equips facilitators with the skills and knowledge necessary to develop an effective communication strategy for engaging with both internal and external stakeholders. It offers foundational theory on communication, assists participants in identifying their target audience, and guides them in tailoring their communication products. The training also provides a range of tools and resources to enhance the effectiveness of their communication efforts.

Landscape Narratives

Landscape narratives are the collective and diverse stories, histories, and interpretations that define and give meaning to a specific landscape. This module helps participants understand the value of communicating their landscape narratives to both internal and external audiences and explores different formats and mediums of storytelling that would be suitable for their context. This module is only currently available in one version:

- **In-person:** This in-person, full-day session introduces landscape narratives as powerful tools for effective landscape communication. Participants will explore the relevance of these narratives, the various formats they can take, and how to collaboratively build them to express a landscape's identity and engage with both local and external stakeholders. The session includes interactive activities in both large and small groups, focusing on sharing experiences and developing a common language through communication exercises. This training is most effective for existing members of a LP who are working together to develop their communication strategy. The ideal number of participants is between 8 and 25.



Advocacy for ILM

This module equips participants with a fundamental yet practical understanding of advocacy and how it can be leveraged to support their long-term sustainability goals within their landscape. This module is only currently available in one version:

- **In-person:** In this in-person, full-day session, participants will explore advocacy's potential as a key process for advancing the landscape's strategic goals. The workshop features numerous group activities, allowing diverse stakeholder representatives to collaborate as a team towards a common goal: creating an advocacy action plan. This approach helps break down siloed thinking. The ideal number of participants is 8 to 25.



Landscape Action Plans

This module introduces the processes and tools for landscape action planning, which is crucial for translating higher-level landscape visions and strategic goals into practical activities and tangible results on the ground. This module is only currently available in one version:

- **Online:** This online training helps participants understand Landscape Action Plans (LAPs) and their importance in initiating landscape action guided by a shared vision and strategy. Participants will learn tools for developing their LAPs and see examples from existing landscapes in Latin America. The training is a 2-hour session on a video-conferencing platform, ideally with 8-12 participants to allow for significant discussion and interaction.



The Landscape Finance Accelerator *(Coming Soon)*

The Landscape Finance Accelerator (LFA) is a structured process and toolkit to help landscape partners identify and secure financial resources. The process involves assessing needs and gaps, mapping financial flows, and structuring finance across various forms of capital: public grants, private philanthropy, impact investments, commercial investments and payment systems. The LFA offers a systemic approach to projects, focusing on a wide range of investments and capital flows, including mentorship and access to extensive resources. LFA tools and resources include:

Lessons Learned and Guidance for Implementing the Landscape Finance Accelerator *(Coming Soon)*

This guide includes a summary of lessons learned from piloting the LFA in landscapes in Malawi, Mexico, Peru, and Vietnam as well as practical guidance to support the implementation of the LFA process.



LFA Toolkit *(Coming Soon)*

This toolkit facilitates the discovery, design, and development of finance solutions that support LPs to realize their goals for transforming the landscape. It is designed to support and integrate with the LFA process. Tools include:

- **Landscape 360 assessment:** A summary profile of the organization, priority projects, financial flows, and financial challenges/gaps within a landscape.
- **Landscape partnership assessment:** An assessment of the mission, organization, activities, and financing of the LP itself.
- **Project portfolio overview:** A portfolio of priority landscape projects that are present and/or in need of development in the landscape.
- **Finance mechanisms overview:** An identification of existing or potential financing instruments.
- **Synthesis:** A summary overview of project priorities and of their financing needs and gaps.

Terraso™ | digital tools

[Terraso](#) is an open-source, mobile-first platform curated for local leaders: landowners, environmental managers, agribusiness, smallholder farmers, pastoralists, indigenous people, local government and investors. Terraso provides these actors with comprehensive, easy-to-use software and data tools to unite stakeholders, overcome conflicting agendas, and find common ground in a sustainable vision for their ecosystem. The platform reduces the time and cost needed to plan, develop and fund investable landscape initiatives. Terraso serves as the core infrastructure for integrating and delivering 1000L services. Terraso tools and services include:



Landscape Profiles

A Terraso landscape profile is where data about the project and LP is stored. Members of a landscape can define and access an overview of the project area and all the relevant data collected and shared by members.



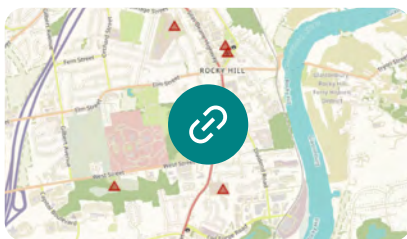
Landscape Groups

Groups allow Terraso users to connect within or outside of their landscapes. Groups are formed around common interests, allowing users to share and exchange information. They can be public or restricted to approved members.



Data collection, storage, and sharing

Terraso users can create and administer surveys to collect online and offline data on the device they choose directly from their Terraso account using KoboToolbox. Users can store and employ the data to better understand their landscape, the challenges they face, and the impact their work is having. They can share data with members of landscapes and groups they belong to via links and files.



Data mapping

Terraso users can upload and share mapping data quickly and easily, creating a project area map. This leads to a shared understanding of the project elements and a way to ground any information being collected, stored, and shared in a real-world visualization of the work. The data mapping feature can be found in each Terraso landscape or group.

Terraso™ | digital tools



Landscape Story Mapping

This tool helps landscape partners to use maps, photos, videos, audio recordings, and narrative to curate an impactful story. These rich stories help landscape partners communicate their needs and successes with potential funders, current donors, potential volunteers, their community, or even the world. The tool has an accompanying tutorial and how-to guide for creating videos with smartphones.

Landscape

LandScale is a user-friendly assessment tool developed by the Rainforest Alliance, Verra, and Conservation International that generates landscape-level sustainability insights. By measuring the combined impact of all activities within landscapes – from ecosystem health and human well-being to governance and production – LandScale helps organizations deliver and credibly communicate sustainability at scale.





INVESTING IN LANDSCAPE PARTNERSHIPS AND THE LANDSCAPE MOVEMENT

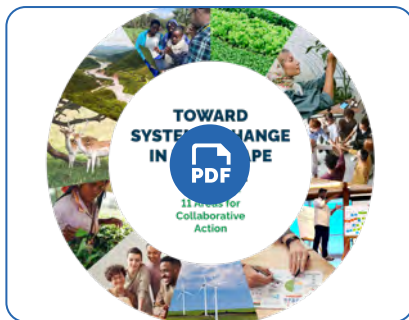
Effective ILM and ILF depend upon an enabling environment of capable actors working within and outside landscapes to collectively improve, advocate for, and implement policies and financial practices supporting LPs.

The following resources offer recommendations and blueprints to inspire financial actors, policymakers, and businesses to strengthen support for holistic action in landscapes.



RESOURCES

Investing in Landscape Partnerships and the Landscape Movement



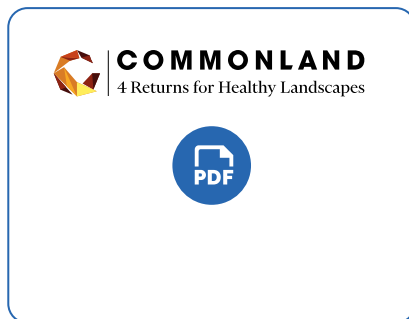
Toward Systemic Change in Landscape Finance: 11 Areas for Collaborative Action

This report outlines 11 key areas where collaborative action is crucial for transforming the landscape finance system. By offering collaborative paths forward, it addresses current barriers to ILF's effective implementation and scaled-up use. Financiers, local landscape leaders, and technical service providers will find specific actions that they can take in this document.



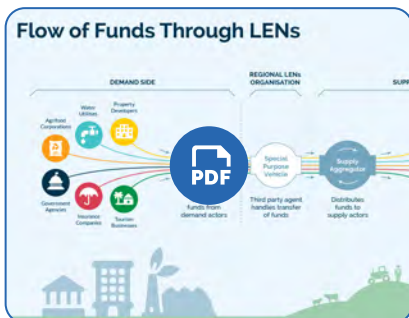
Philanthropic Action for Thriving Landscapes: Notes and Ideas for Action

During Climate Week in New York City, 1000L convened a group of philanthropists who actively support thriving landscapes for a lively dialogue on leveraging their unique roles to accelerate funding for LPs. The report draws from the discussion to outline five key ways that philanthropies can act strategically and collaboratively to generate impacts for landscapes at scale.



Towards Financing Large-Scale Holistic Landscape Restoration in Europe

This report explains how European Union development funding should employ landscape finance because it can overcome obstacles in green finance and effectively support large-scale landscape restoration. Combining manufactured "grey" infrastructure with natural "green" infrastructure leads to greater financial, social, and environmental returns while mitigating risk. The report includes policy recommendations for EU actors to support holistic landscape restoration.



A Blueprint for Landscape Enterprise Networks (LENS)

This blueprint breaks down the objectives, key elements, implementation stages, and landscape-level impact of Landscape Enterprise Networks (LENS). LENS is a system to organize the buying and selling of nature-based solutions. It creates marketplaces that enable large corporations and government agencies to identify and co-fund regenerative activities that address their needs and shared risks in a landscape.



The Role of a Landscape Bond in Financing Sustainable Land Use and Territorial Development

This paper introduces the landscape bond and explains its importance, who might issue it, and likely investors. It highlights why a landscape bond's ILM approach is uniquely positioned to address sustainability, biodiversity, and socioeconomic challenges. The paper explores how the instrument could serve those in the financial community and examines the evolving incentives for issuing a landscape bond, how it could work, and how it can attract investor interest and confidence.



Lessons Learned from Integrated Landscape Finance to Advance the Global Biodiversity Framework

This report explains how ILF can inform countries' biodiversity finance plans that they must create to achieve the goals set by the Global Biodiversity Framework. It aims to inform the transition to these more holistic plans by considering how ILF's concepts, lessons, and tools can inform and strengthen planning to yield more effective, efficient, and equitable results for people and nature.



Synthesis Report: Exploring the Potential of a Kenya Landscapes Coalition

This report details findings from a study on the feasibility of forming a national coalition of landscape partnerships in Kenya. Through focus group discussions with youth groups and interviews with representatives from landscapes across Kenya, 1000L found demand for a national-level coalition and identified key areas where a coalition could strengthen enabling conditions for ILM.

1000L Partners:



We would like to show our appreciation and give a special thanks to all the Landscape Partnerships we worked with to help us develop these materials:

Abancay	Karnakata Landscape	Selva Maya
AIVelAI	Kiambu County	Sierra de Tapalpa
ANEI Sacred Sierra	Laikipia County	Sintang District Landscape
Bajo Mayo, Lamas	Lari Landscape	Sui River Landscape
Central Highlands landscape	Mount Kenya	Thithimathi Conservation Landscape
Chocó Andino	Mount Mulanje	uMngeni Ecological Infrastructure
COBIOCOM	Risaralda Model Forest	Partnership
Flow Country Scotland	Rupununi	Western Highlands
Great Sea Reef	San Martin Landscape	

This work would not be possible without the dedication, support, and financial resources provided by our donors. We would like to recognize the following:

Carasso	IUCN	Skoll Foundation
Cisco Foundation	Landscape Finance Lab	Small Family Foundation
Climate KIC	Laudes Foundation	Target Foundation
CommonLand	Mulago	Tech Matters
Conservation Internation	Natural Resources Canada -	The Rockefeller Foundation
Dutch Postcode Lottery Dream Fund	Global Forest Leadership Program	UNDP
EcoAg	Patrick J. McGovern Foundation	US Department of Interior Bureau of
Fondazione Cariplo	Rainforest Alliance	Land Management
Hitz Foundation	Regen10	
IKEA Foundation	Schmidt Futures	



www.landscapes.global

GENERAL MESSAGES

1000Landscapes@ecoagriculture.org

DONATIONS TO 1000 LANDSCAPES

sscherr@ecoagriculture.org (Sara Scherr)

MEDIA OR OUTREACH

mkeller@ecoagriculture.org (Michael Keller)

FACEBOOK PAGE

1000Landscapes

LINKED IN

1000 Landscapes for 1 Billion People